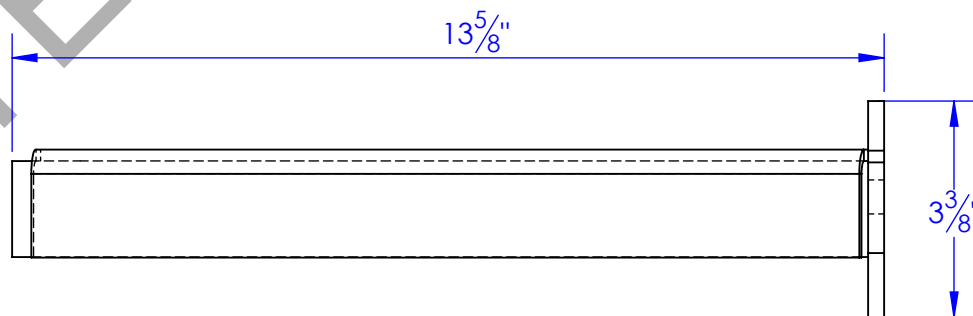
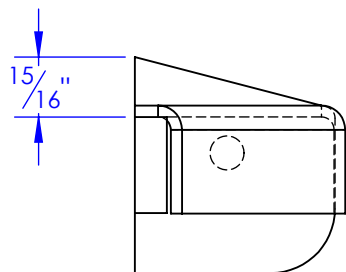
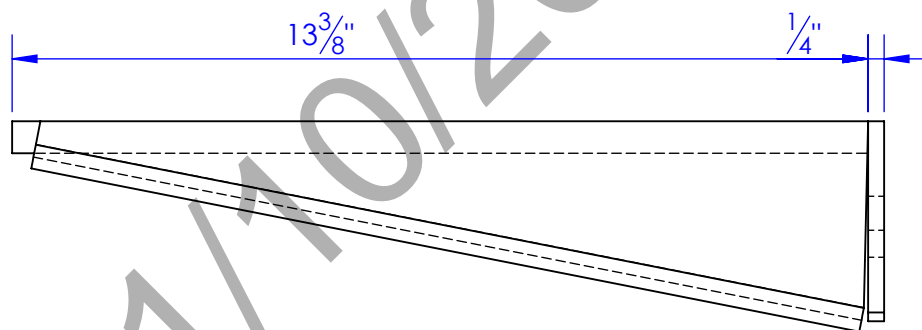
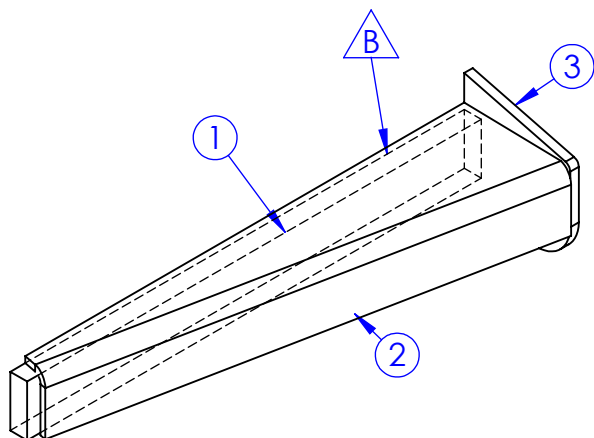


| ITEM NO. | PART NUMBER          | DESCRIPTION                                     | MATERIAL         | DRAWING # | QTY. |
|----------|----------------------|---|------------------|-----------|------|
| 1        | FI .5 x 1.5 L 13.375 | LENGTH: 13-3/8"                                 | FI 1/2" x 1-1/2" | STOCK     | 1    |
| 2        | FP-HFL-623           | END CAP, REAR, PIVOT END, HYDRA FLKR.           | 7 ga HRS.        | 40-1208   | 1    |
| 3        | FP-HFL-222           | IDLER PLATE, FLAKER END, HYDRA FLKR, PUSHER END | 1/4" HRS         | 40-2200   | 1    |

|      | REVISIONS        |          |          |
|------|------------------|----------|----------|
| REV. | DESCRIPTION      | DATE     | APPROVED |
| B    | REMOVED 1/4" GAP | 2/9/2012 |          |



**PROPRIETARY AND CONFIDENTIAL**  
THE INFORMATION CONTAINED IN THIS  
DRAWING IS THE SOLE PROPERTY OF TRIPLE  
C INC. ANY REPRODUCTION IN PART OR  
AS A WHOLE WITHOUT THE WRITTEN  
PERMISSION OF TRIPLE C INC. IS PROHIBITED.

|  |    |
|--|----|
| DIMENSIONS ARE IN INCHES<br>TOLERANCES:<br>FRACTIONAL $\pm 1/16$<br>ANGULAR: MACH $\pm 1$ BEND $\pm$<br>TWO PLACE DECIMAL $\pm 010$<br>THREE PLACE DECIMAL $\pm 005$ |    |
| MATERIAL   | -- |
| DO NOT SCALE DRAWING   |    |

|   |            |
|---|------------|
| NAME  | DATE       |
| DRAWN <b>HEATH</b>  | 6/5/2012   |
| PART #  | FP-HFL-625 |
| ASM #   |            |
| COMMENTS:<br>END CAP, REAR,<br>PIVOT END, HYDRA<br>FLKR, WLDMT. |            |

P.O. BOX 248,  
SABETHA, KS 66534

**TRIPLE C**  
INC.

|               |                           |               |
|---------------|---------------------------|---------------|
| SIZE <b>A</b> | DWG. NO. <b>40-1206 B</b> | REV. <b>B</b> |
| SCALE: 1:3    | WEIGHT: 5.74 LBS.         | SHEET 1 OF 1  |